



Rail Capacity in Canada

Presenter: John Schmitter

September 22, 2022

COAL ASSOCIATION OF CANADA

The RailState Solution

Network of sensors produces a profile of every train:



The Data We Gather Is Not Available Any Other Way



What's Missing from Rail? Network Visibility

Ships

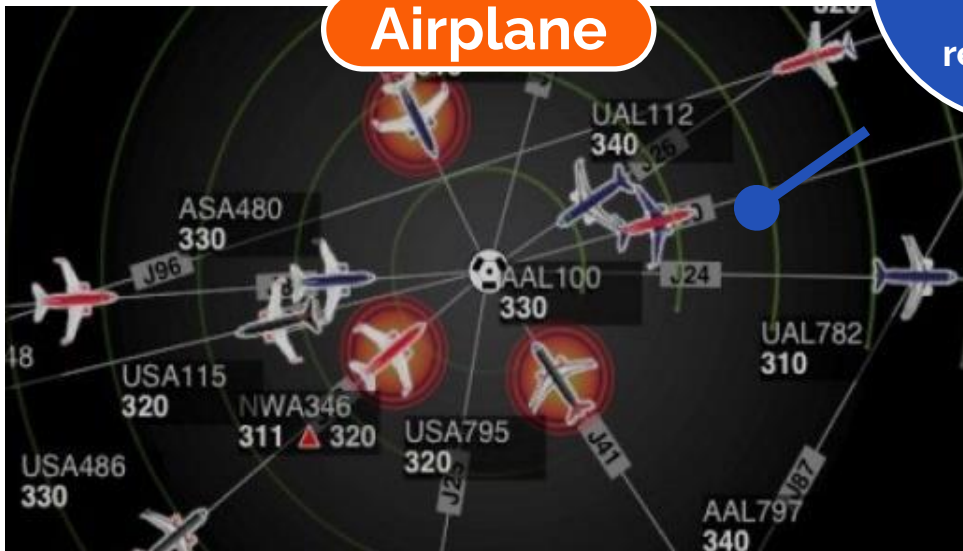


Trucks



3 can see the entire network in real-time

Airplane



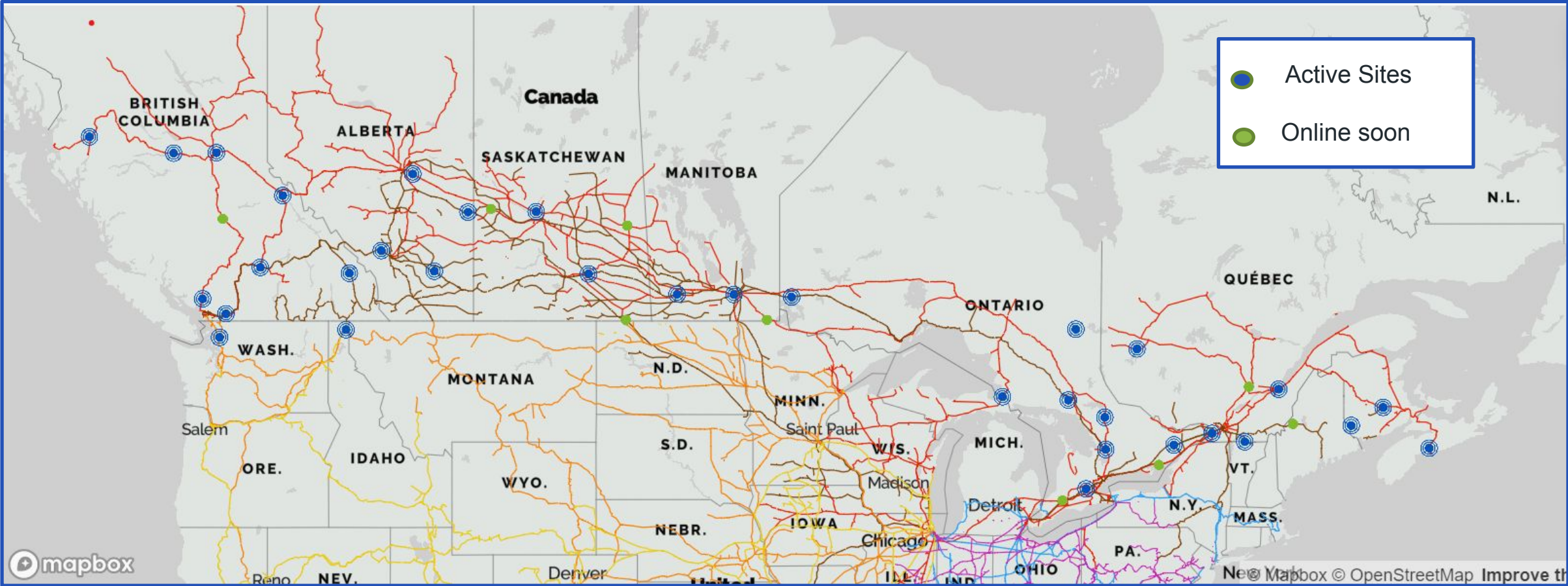
Railways

724 (Sub-No. 5) - U.S. Performance Data Reporting

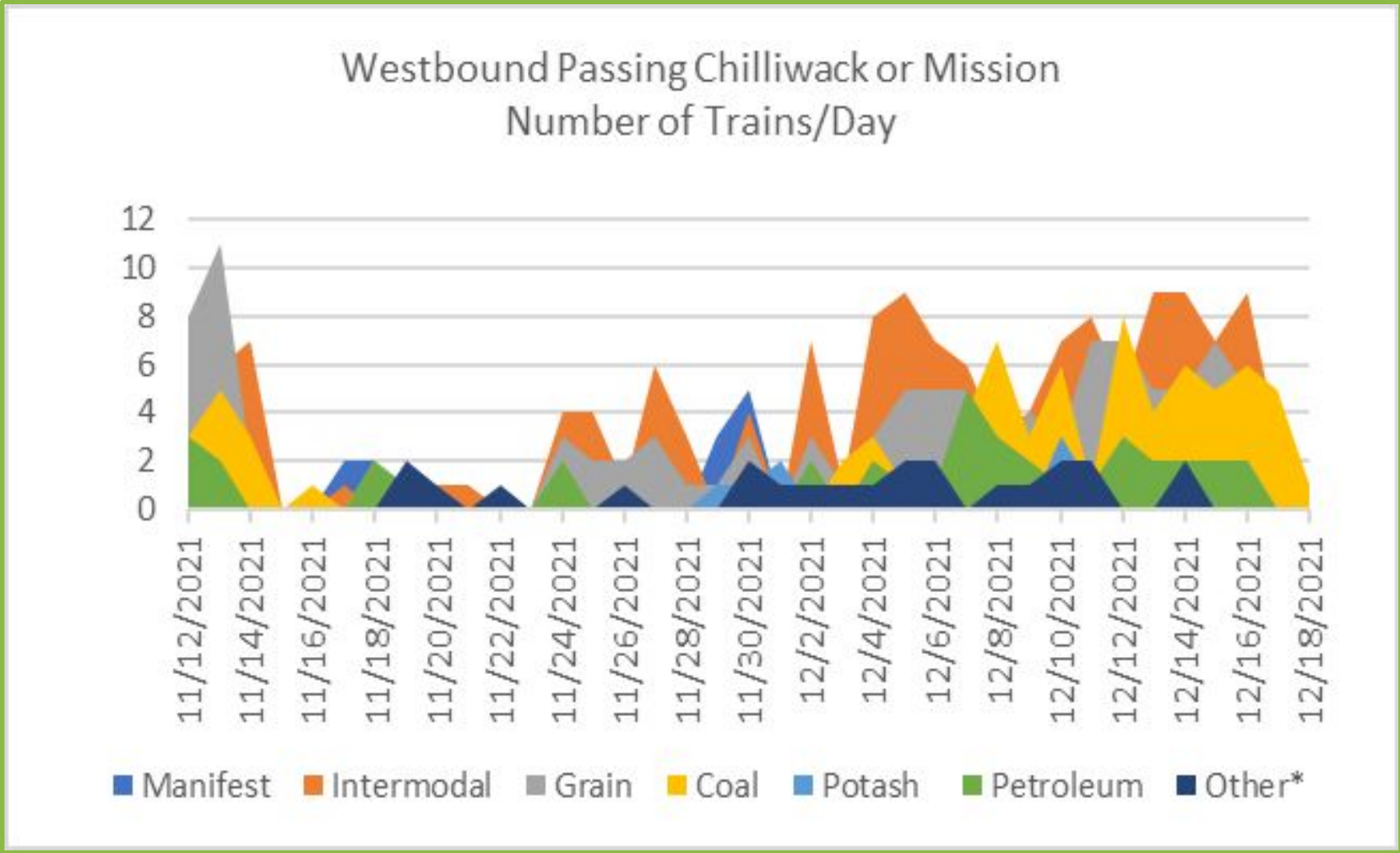
Railroad: CN	Year: 2022	Reporting Week:	OMB Control No. 2140-0033	Expiration Date: 12/31/2020		
1. Average Train Speed in System Average Train Speed per hour			Date Week Began: 2022/02/19	Date Week Ended: 2022/02/25		
Coal			Crude oil	31.1	30.6	21
Crude			Grain	33.6	36.1	0
Ethanol			Intermodal	37.2	47.4	0
Grain	19.36		Manifest	30.9	36.7	19.5
Intermodal	23.66		Ethanol	..	33	0
Manifest	18.69		Chemicals or allied products
Other Unit	18.56		Automotive	0
System (U.S. Average)	19.76		Fertilizer
			Other commodities	30.2	39.6	60.2
			System-wide	33.9	39.4	27.7

You only have some system average statistics from 2-3 weeks ago

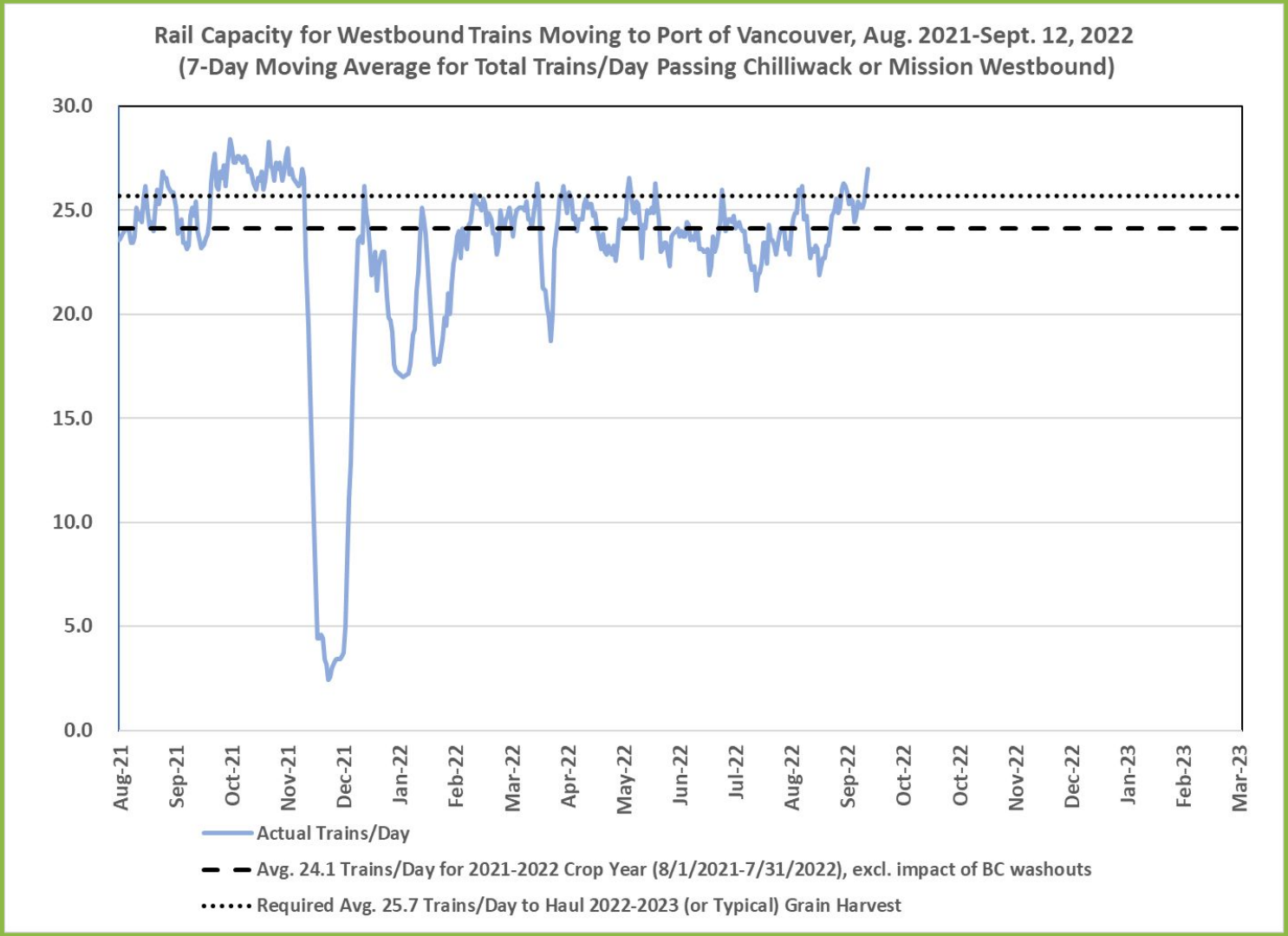
RailState Network Across Canada



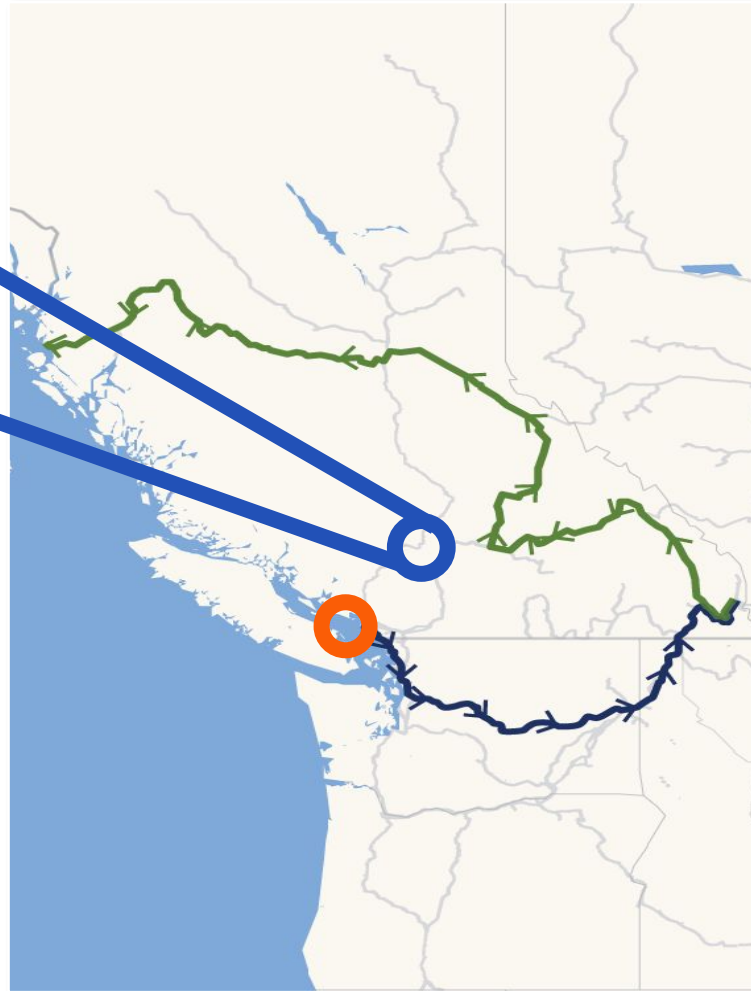
BC Rail Washouts- November 2021








Measuring Capacity for Vancouver Grain Exports



Teck Case Study – 2021 BC Floods



RailState's Data Showed:

- ✓  When the train flow had **stopped**
- ✓  **How many trains** of each type were backed up on either side of the washout
- ✓  The **magnitude** of the railways' issues
- ✓  BNSF **traffic** between the US border and WTL was **still flowing**
- ✓  **How many** of each train type were moving over that route

Summary

Supply chain management isn't just about **VISIBILITY** of **CURRENT** shipments, but the **CAPACITY** available for the **NEXT** shipments

- Tracking your current shipments is only the beginning
- With capacity constrained due to RR business decisions, capacity may not be available when you need it or when the railroad promised it
- The ability to grow your business depends on knowledge of the network





Thank You

John Schmitter
303.378.5368
johnschmitter@railstate.com
www.RailState.com